

Assessment Results: Spring 2019 Administrations

Hazlet Public Schools
October 28, 2019

Measuring
College and
Career
Readiness

NEW JERSEY STUDENT LEARNING ASSESSMENT (NJSLA)

ELA and
Math

NJSLA PERFORMANCE LEVELS

- Level 1 (650-699): Did not yet meet expectations
- Level 2 (700-724): Partially met expectations
- Level 3 (725-749): Approached expectations
- Level 4 (Beginning at 750): Met expectations
- Level 5 (Ending at 850): Exceeded expectations

*Levels 4 and 5 are an indication a student is on pace to be college and career ready

Comparison of Spring 2017, Spring 2018 & Spring 2019 NJSLA Administrations English Language Arts - Percentages

Grade	Level 1 2017	Level 1 2018	Level 1 2019	Level 2 2017	Level 2 2018	Level 2 2019	Level 3 2017	Level 3 2018	Level 3 2019	Level 4 2017	Level 4 2018	Level 4 2019	Level 5 2017	Level 5 2018	Level 5 2019	Change in Level 1 and 2 2017 to 2019	Change in Level 4 and 5 2017 to 2019**
3	3.3	8.7	12.7	11.5	14.8	12.2	26.4	26.0	28.0	50.0	41.8	43.4	8.8	8.7	3.7	10.0	-11.7
4	4.6	4.2	7.7	8.2	6.3	8.2	25.0	21.7	24.6	53.1	51.3	39.0	9.2	16.4	20.5	2.7	-2.4
5	0.9	3.0	4.8	9.9	7.5	5.8	22.5	17.5	16.9	50.0	62.5	54.5	16.7	9.5	18.0	-0.2	5.8
6	0.9	1.4	1.0	10.7	5.9	9.0	22.6	18.1	16.9	56.0	50.2	52.7	9.8	24.4	20.4	-1.6	7.3
7	7.2	2.2	5.6	12.6	11.9	6.5	22.9	23.0	23.6	39.9	41.2	32.9	17.5	21.7	31.5	-7.7	7.0
8	3.0	8.2	3.6	12.9	13.6	11.6	24.0	21.8	20.5	47.6	39.1	46.0	12.4	17.3	18.3	1.3	-1.0
9	7.5	3.5	10.6	18.9	9.1	10.6	30.0	29.1	18.1	37.0	46.1	42.1	6.6	12.2	18.5	-5.0	17.2
10	16.5	22.0	5.3	15.3	21.6	12.8	18.1	24.7	15.9	39.8	27.3	34.1	10.4	4.4	31.9	-12.9	15.2

*Grade 11 test was optional for 2018-2019 assessment year. **Level 4 and Level 5 is an indication a student is on pace to be college and career ready. 4

Notes: Data shown is preliminary. Percentages may not total 100 due to rounding.

Comparison of Spring 2017, Spring 2018 & Spring 2019 NJSLA Administrations Mathematics - Percentages

Grade	Level 1 2017	Level 1 2018	Level 1 2019	Level 2 2017	Level 2 2018	Level 2 2019	Level 3 2017	Level 3 2018	Level 3 2019	Level 4 2017	Level 4 2018	Level 4 2019	Level 5 2017	Level 5 2018	Level 5 2019	Change in Level 1 and 2 2017 to 2019	Change in Level 4 and 5 2017 to 2019**
3	3.8	5.6	4.2	12.6	17.3	15.3	30.2	28.1	23.3	39.6	37.8	47.6	13.7	11.2	9.5	3.1	3.8
4	5.1	2.1	6.7	9.1	9.0	15.4	31.5	29.6	25.6	50.8	50.3	47.2	3.6	9.0	5.1	7.4	-1.7
5	0.0	0.5	2.1	11.7	8.5	11.6	33.8	30.5	31.2	46.8	49.5	43.9	7.7	11.0	11.1	2.0	0.5
6	1.7	1.8	2.5	14.5	10.4	16.4	32.5	33.0	27.9	47.0	47.1	49.3	4.3	7.7	4.0	2.7	2.0
7	4.5	4.0	1.1	17.9	16.9	16.6	44.4	41.8	34.8	30.5	37.3	43.9	2.7	0.0	3.7	-4.8	14.4
8*	14.5	29.4	17.6	28.2	33.3	43.5	46.0	27.8	26.9	11.3	9.5	12.0	0.0	0.0	0.0	18.4	0.7
ALG I***	10.2	8.7	7.3	22.2	18.4	23.4	30.0	32.1	21.2	36.2	39.7	47.1	1.4	1.1	1.1	-17.5	30.9
GEO***	12.6	10.5	6.6	38.9	44.8	21.9	37.4	33.8	39.3	11.1	11.0	31.1	0.0	0.0	1.1	-18.8	13.4
ALG II***	44.2	38.8	14.7	22.5	36.8	22.5	17.3	13.9	31.4	15.6	10.0	31.4	0.4	0.5	0.0	-29.7	15.7

*Approximately 30,000 New Jersey students in grade 8 participated in the Algebra I assessment. Thus, Math 8 outcomes are not representative of grade 8 performance as a whole. **Level 4 and Level 5 is an indication a student is on pace to be college and career ready.

*** NJSLA 2018-2019 assessments were optional for 11th Grade students

Notes: Data shown is preliminary. Percentages may not total 100 due to rounding. ALG 1 is Algebra 1; GEO is Geometry; ALG II is Algebra 2.

Comparison of 2017 to 2019 Spring NJSLA Administrations English Language Arts – Percentage Changes

Grade	Levels 1 & 2 District Trend	Levels 1 & 2 District	Levels 1 & 2 State Trend	Levels 1 & 2 State	Level 3 District Trend	Level 3 District	Level 3 State Trend	Level 3 State	Levels 4 & 5 District Trend	Levels 4 & 5 District	Levels 4 & 5 State Trend	Levels 4 & 5 State
3	+	10.0%	+	1.3%	+	1.7%	-	1.1%	-	11.7%	-	0.1%
4	+	2.7%	+	0.7%	-	0.3%	-	2.3%	-	2.4%	+	1.5%
5	-	0.2%	+	0.9%	-	5.6%	+	0.1%	+	5.8%	-	1.1%
6	-	1.6%	-	1.1%	-	5.7%	-	1.7%	+	7.3%	+	2.8%
7	-	7.7%	-	1.0%	+	0.7%	-	2.7%	+	7.0%	+	3.6%
8	+	1.3%	-	1.2%	-	0.3%	-	2.6%	-	1.0%	+	3.7%
9	-	5.0%	-	2.5%	-	12.2%	-	1.8%	+	17.2%	+	4.4%
10	-	12.9%	-	8.9%	-	2.3%	-	3.6%	+	15.2%	+	12.5%

* NJSLA 2018-2019 assessments were optional for 11th Grade students . State Percentages do not include results for Grade 11.

- Notes: Percentages may not total 100 due to rounding.
- The plus sign (+) indicates an increase of the % change from the previous year where a minus sign (-) shows a decrease of the % change from the previous year.

Comparison of 2017 to 2019 Spring NJSLA Administrations Mathematics – Percentage Changes

Grade	Levels 1 & 2 District Trend	Levels 1 & 2 District	Levels 1 & 2 State Trend	Levels 1 & 2 State	Level 3 District Trend	Level 3 District	Level 3 State Trend	Level 3 State	Levels 4 & 5 District Trend	Levels 4 & 5 District	Levels 4 & 5 State Trend	Levels 4 & 5 State
3	+	3.1%	-	0.5%	-	6.9%	-	2.1%	+	3.8%	+	2.6%
4	+	7.4%	-	2.3%	-	5.7%	-	1.4%	-	1.7%	+	3.7%
5	+	2.0%	+	3.2%	-	2.6%	-	3.8%	+	0.5%	+	0.6%
6	+	2.7%	+	3.4%	-	4.6%	-	0.3%	+	2.0%	-	3.1%
7	-	4.8%	+	0.7%	-	9.6%	-	3.7%	+	14.4%	+	1.6%
8	+	18.4%	+	2.1%	-	19.1%	-	0.4%	+	0.7%	+	2.6%
Algebra I***	-	17.5%	+	2.0%	-	13.4%	-	3.0%	+	30.9%	+	1.0%
Algebra II***	-	18.8%	-	1.1%	+	5.4%		0.0%	+	13.4%	+	1.1%
Geometry***	-	29.7%	-	0.1%	+	14.0%	+	0.3%	+	15.7%	-	0.3%

*Some students in grade 8 participated in the Algebra I assessment in place of the 8th grade Math assessment. Thus, Math 8 outcomes are not representative of grade 8 performance as a whole. *** NJSLA 2018-2019 assessments were optional for 11th Grade students, state results do not include Grade 11 results.

Notes: Percentages may not total 100 due to rounding.

- The plus sign (+) indicates an increase of the % change from the previous year where a minus sign (-) shows a decrease of the % change from the previous year.

Comparison of Number of Students Tested Spring 2018 & Spring 2019 NJSLA Administrations English Language Arts

Grade	Students Tested 2019	Students Tested 2018	Difference between number of students tested in 2018 and 2019
3	189	196	-7
4	195	189	+6
5	189	200	-11
6	201	221	-20
7	216	226	-10
8	224	220	+4
9	216	230	-14
10	226	227	-1
Total	1656	1709	-53

**** NJSLA 2018-2019 assessments were optional for 11th Grade students.**

Note: "Students Tested" represents individual valid test scores for English Language Arts.

Comparison of Number of Students Tested Spring 2018 & Spring 2019 NJSLA Administrations Mathematics

Grade	Students Tested 2019	Students Tested 2018	Difference between number of students tested in 2018 and 2019
3	189	196	-7
4	195	189	+6
5	189	200	-11
6	201	221	-20
7	187	201	-14
8*	108	126	-18
Algebra I**	274	277	-3
Algebra II**	102	209	-107
Geometry**	183	201	-18
Total	1628	1820	-192

*Some students in grade 8 participated in the Algebra I assessment in place of the 8th grade Math assessment. Thus, Math 8 outcomes are not representative of grade 8 performance as a whole.

** NJSLA 2018-2019 assessments were optional for 11th Grade students

Notes: "Students Tested" represents individual valid test scores for Mathematics.

Comparison of Spring 2019 NJSLA Administrations English Language Arts to New Jersey Percentages for 2019

Grade	Level 1, District	Level 1, State	Level 2, District	Level 2, State	Level 3, District	Level 3, State	Level 4, District	Level 4, State	Level 5, District	Level 5, State
3	12.7	14.0	12.2	14.4	28.0	21.4	43.4	42.8	3.7	7.4
4	7.7	8.6	8.2	12.6	24.6	21.4	39.0	39.1	20.5	18.3
5	4.8	7.4	5.8	12.5	16.9	22.2	54.5	45.6	18.0	12.3
6	1.0	7.3	9.0	12.6	16.9	23.9	52.7	40.9	20.4	15.2
7	5.6	8.9	6.5	10.5	23.6	17.8	32.9	33.1	31.5	29.7
8	3.6	9.2	11.6	10.3	20.5	17.7	46.0	38.0	18.3	24.9
9	10.6	11.3	10.6	11.8	18.1	21.1	42.1	36.7	18.5	19.2
10	5.3	14.3	12.8	10.9	15.9	15.9	34.1	33.4	31.9	25.5

*Grade 11 does not include students who took an AP/IB test.

** NJSLA 2018-2019 assessments were optional for 11th Grade students, state results do not include Grade 11 results.

Notes: Percentages may not total 100 due to rounding.

Comparison of Spring 2019 NJSLA Administrations Mathematics to New Jersey - Percentages for 2019

Grade	Level 1, District	Level 1, State	Level 2, District	Level 2, State	Level 3, District	Level 3, State	Level 4, District	Level 4, State	Level 5, District	Level 5, State
3	4.2	8.0	15.3	13.9	23.3	23.0	47.6	41.2	9.5	13.9
4	6.7	8.6	15.4	14.7	25.6	25.7	47.2	43.3	5.1	7.7
5	2.1	6.4	11.6	20.9	31.2	25.8	43.9	35.8	11.1	11.0
6	2.5	9.6	16.4	22.5	27.9	27.4	49.3	33.1	4.0	7.5
7	1.1	7.6	16.6	21.1	34.8	29.3	43.9	33.8	3.7	8.3
8*	17.6	23.3	43.5	23.1	26.9	24.3	12.0	28.2	0.0	1.1
Algebra I**	7.3	9.3	23.4	26.0	21.2	21.4	47.1	37.7	1.1	5.6
Algebra II**	6.6	10.6	21.9	11.7	39.3	21.4	31.1	49.7	1.1	6.6
Geometry**	14.7	10.4	22.5	24.6	31.4	32.8	31.4	26.9	0.0	5.3

*Some students in grade 8 participated in the Algebra I assessment in place of the 8th grade Math assessment. Thus, Math 8 outcomes are not representative of grade 8 performance as a whole.

** NJSLA 2018-2019 assessments were optional for 11th Grade students, state results do not include Grade 11 results.

Notes: Percentages may not total 100 due to rounding.

2019 Spring NJSLA School- & Grade-Level Outcomes English Language Arts Grade 3 - Percentages

ELA03	Not Yet Meeting Expectations (Level 1)	Partially Meeting Expectations (Level 2)	Approaching Expectations (Level 3)	Meeting Expectations (Level 4)	Exceeding Expectations (Level 5)	% of students at Level 4 and 5
LDS	17	14	28	41	0	41
MRS	8	13	31	41	8	49
RVS	13	9	25	50	4	54

2019 Spring NJSLA School- & Grade-Level Outcomes English Language Arts Grade 4 - Percentages

ELA04	Not Yet Meeting Expectations (% Level 1)	Partially Meeting Expectations (% Level 2)	Approaching Expectations (% Level 3)	Meeting Expectations (% Level 4)	Exceeding Expectations (% Level 5)	% of students at Level 4 and 5
LDS	2	10	31	40	17	57
MRS	5	6	22	39	29	68
RVS	17	10	23	38	12	50

2019 Spring NJSLA School- & Grade-Level Outcomes English Language Arts Grade 5 - Percentages

ELA05	Not Yet Meeting Expectations (% Level 1)	Partially Meeting Expectations (% Level 2)	Approaching Expectations (% Level 3)	Meeting Expectations (% Level 4)	Exceeding Expectations (% Level 5)	% of students at Level 4 and 5
BSS	5	5	14	58	18	76
CRS	4	8	22	49	18	67

2019 Spring NJSLA School- & Grade-Level Outcomes English Language Arts Grade 6 - Percentages

ELA06	Not Yet Meeting Expectations (% Level 1)	Partially Meeting Expectations (% Level 2)	Approaching Expectations (% Level 3)	Meeting Expectations (% Level 4)	Exceeding Expectations (% Level 5)	% of students at Level 4 and 5
BSS	2	11	13	55	18	73
CRS	0	6	21	50	23	73

2019 Spring NJSLA School- & Grade-Level Outcomes Mathematics 3 - Percentages

MAT03	Not Yet Meeting Expectations (Level 1)	Partially Meeting Expectations (Level 2)	Approaching Expectations (Level 3)	Meeting Expectations (Level 4)	Exceeding Expectations (Level 5)	% of students at Level 4 and 5
LDS	4	25	20	42	9	51
MRS	3	13	27	50	8	58
RVS	5	7	23	52	13	65

2019 Spring NJSLA School- & Grade-Level Outcomes Mathematics 4 - Percentages

MAT04	Not Yet Meeting Expectations (Level 1)	Partially Meeting Expectations (Level 2)	Approaching Expectations (Level 3)	Meeting Expectations (Level 4)	Exceeding Expectations (Level 5)	% of students at Level 4 and 5
LDS	6	17	29	38	10	48
MRS	5	13	24	57	1	58
RVS	10	17	25	42	7	49

2019 Spring NJSLA School- & Grade-Level Outcomes Mathematics 5 - Percentages

MAT05	Not Yet Meeting Expectations (Level 1)	Partially Meeting Expectations (Level 2)	Approaching Expectations (Level 3)	Meeting Expectations (Level 4)	Exceeding Expectations (Level 5)	% of students at Level 4 and 5
BSS	4	10	22	55	10	65
CRS	0	14	44	29	13	42

2019 Spring NJSLA School- & Grade-Level Outcomes Mathematics 6 - Percentages

MAT06	Not Yet Meeting Expectations (Level 1)	Partially Meeting Expectations (Level 2)	Approaching Expectations (Level 3)	Meeting Expectations (Level 4)	Exceeding Expectations (Level 5)	% of students at Level 4 and 5
BSS	4	15	27	50	5	55
CRS	1	18	29	49	3	52

Comparison of Spring 2019 Administration English Language Arts to **Hazlet** Percentages in 2019

Grade	Level 1, School	Level 1, District	Level 2, School	Level 2, District	Level 3, School	Level 3, District	Level 4, School	Level 4, District	Level 5, School	Level 5, District
LDS 3	17	13	14	12	28	28	41	43	0	4
LDS 4	2	8	10	8	31	25	40	39	17	21
MRS 3	8	13	13	12	31	28	41	43	8	4
MRS 4	5	8	6	8	22	25	39	39	29	21
RVS 3	13	13	9	12	25	28	50	43	4	4
RVS 4	17	8	10	8	23	25	38	39	12	21

Notes: Percentages may not total 100 due to rounding.

Comparison of Spring 2019 Administration English Language Arts to **Hazlet** Percentages in 2019

Grade	Level 1, School	Level 1, District	Level 2, School	Level 2, District	Level 3, School	Level 3, District	Level 4, School	Level 4, District	Level 5, School	Level 5, District
BSS 5	5	5	5	6	14	17	58	54	18	18
CRS 5	4	5	8	6	22	17	49	54	18	18
BSS 6	2	1	11	9	13	17	55	53	18	20
CRS 6	0	1	6	9	21	17	50	53	23	20

Notes: Percentages may not total 100 due to rounding.

Comparison of Spring 2019 Administration Mathematics to **Hazlet** Percentages for 2019

Grade	Level 1, School	Level 1, District	Level 2, School	Level 2, District	Level 3, School	Level 3, District	Level 4, School	Level 4, District	Level 5, School	Level 5, District
LDS 3	4	4	25	15	20	23	42	48	9	10
LDS 4	6	7	17	15	29	26	38	47	10	5
MRS 3	3	4	13	15	27	23	50	48	8	10
MRS 4	5	7	13	15	24	26	57	47	1	5
RVS 3	5	4	7	15	23	23	52	48	13	10
RVS 4	10	7	17	15	25	26	42	47	7	5

Notes: Percentages may not total 100 due to rounding.

Comparison of Spring 2019 Administration Mathematics to **Hazlet** Percentages for 2019

Grade	Level 1, School	Level 1, District	Level 2, School	Level 2, District	Level 3, School	Level 3, District	Level 4, School	Level 4, District	Level 5, School	Level 5, District
BSS 5	4	2	10	12	22	31	55	44	10	11
BSS 6	4	2	15	16	27	28	50	49	5	4
CRS 5	0	2	14	12	44	31	29	44	13	11
CRS 6	1	2	18	16	29	28	49	49	3	4

Notes: Percentages may not total 100 due to rounding.

Comparison of Subgroups Spring 2018 and Spring 2019 NJSLA Administrations English Language Arts- Percentages

	Not Yet Meeting Expectations (Level 1)		Partially Meeting Expectations (Level 2)		Approaching Expectations (Level 3)		Meeting Expectations (Level 4)		Exceeding Expectations (Level 5)	
	2018	2019	2018	2019	2018	2019	2018	2019	2018	2019
Asian	3.4	0.0	5.1	0.0	18.6	16.9	44.1	47.5	28.8	35.6
Black	20.0	8.0	16.0	24.0	24.0	20.0	20.0	36.0	20.0	12.0
Hispanic	5.8	12.6	15.2	11.3	26.8	22.5	46.4	37.7	5.8	15.9
Multiple	4.8	6.4	7.9	6.4	20.6	21.8	49.2	48.7	17.5	16.7
White	6.8	5.9	11.4	9.8	22.7	20.3	44.7	43.0	14.4	21.0
Female	3.1	4.5	8.2	7.1	19.2	17.7	50.6	45.4	18.9	25.4
Male	10.1	8.1	14.5	12.1	26.2	23.1	39.1	40.4	10.2	16.3
Free or Reduced Lunch	10.6	10.6	15.4	12.6	28.7	27.1	38.1	38.2	7.3	11.6
Section 504	3.9	2.7	18.2	9.6	31.2	27.4	39.0	53.4	7.8	6.8
LEP	10.7	13.3	21.4	20.0	39.3	23.3	25.0	30.0	3.6	13.3
Special Education	19.7	22.3	25.7	22.3	30.4	26.2	20.3	22.3	3.9	7.0
GenEd	3.0	2.0	7.1	6.0	20.3	18.8	52.0	48.7	17.6	24.6

Comparison of Subgroups Spring 2018 and Spring 2019 NJSLA Administrations Mathematics - Percentages

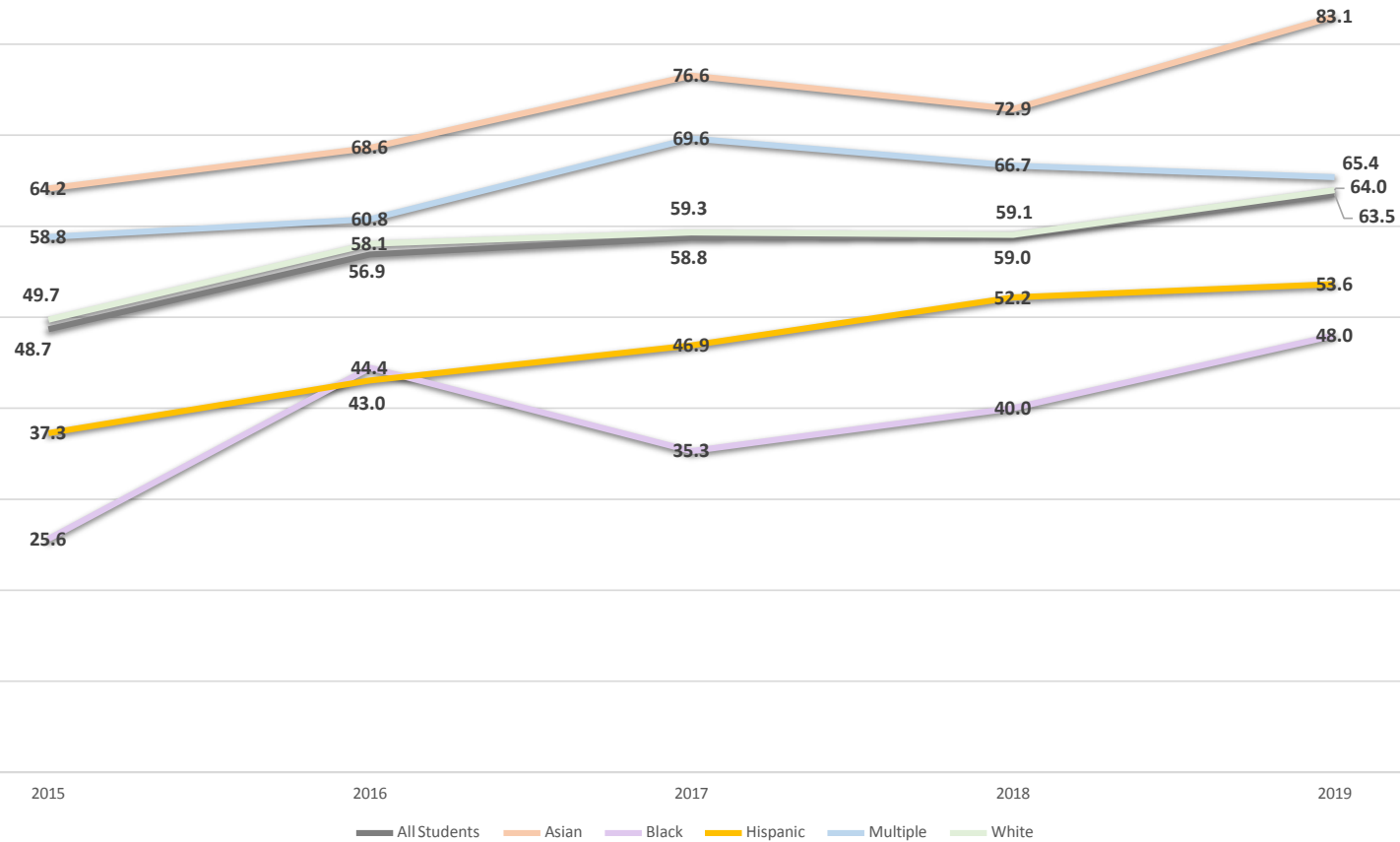
	Not Yet Meeting Expectations (Level 1)		Partially Meeting Expectations (Level 2)		Approaching Expectations (Level 3)		Meeting Expectations (Level 4)		Exceeding Expectations (Level 5)	
	2018	2019	2018	2019	2018	2019	2018	2019	2018	2019
Asian	3.3	0.0	16.7	6.1	28.3	30.6	43.3	53.1	8.3	10.2
Black	32.3	8.0	19.4	24.0	22.6	32.0	25.8	36.0	0.0	0.0
Hispanic	12.8	7.2	27.6	26.1	30.8	32.0	27.6	32.0	1.3	2.6
Multiple	4.8	7.7	7.9	12.8	25.4	25.6	57.1	51.3	4.8	2.6
White	10.4	6.1	21.4	20.0	30.6	28.4	32.9	41.2	4.7	4.3
Female	9.8	4.5	21.4	19.8	29.7	30.9	34.9	41.4	4.2	3.4
Male	11.1	7.6	21.1	20.0	30.7	26.7	32.3	40.8	4.7	4.9
Free or Reduced Lunch	14.6	10.2	27.3	23.7	33.2	36.8	23.5	28.0	1.5	1.2
Section 504	5.0	2.8	26.3	31.9	37.5	33.3	31.3	29.2	0.0	2.8
LEP	10.3	10.7	31.0	28.6	37.9	28.6	20.7	32.1	0.0	0.0
Special Education	24.4	15.4	32.7	38.7	22.0	23.6	19.7	20.6	1.2	1.6
GenEd	6.4	3.4	17.7	14.3	32.5	30.2	37.9	47.2	5.6	5.0

Hazlet School District

Subgroup Charts - Race

English/Language Arts Literacy

Performance of subgroups over 5 years (% Meeting or Exceeding)

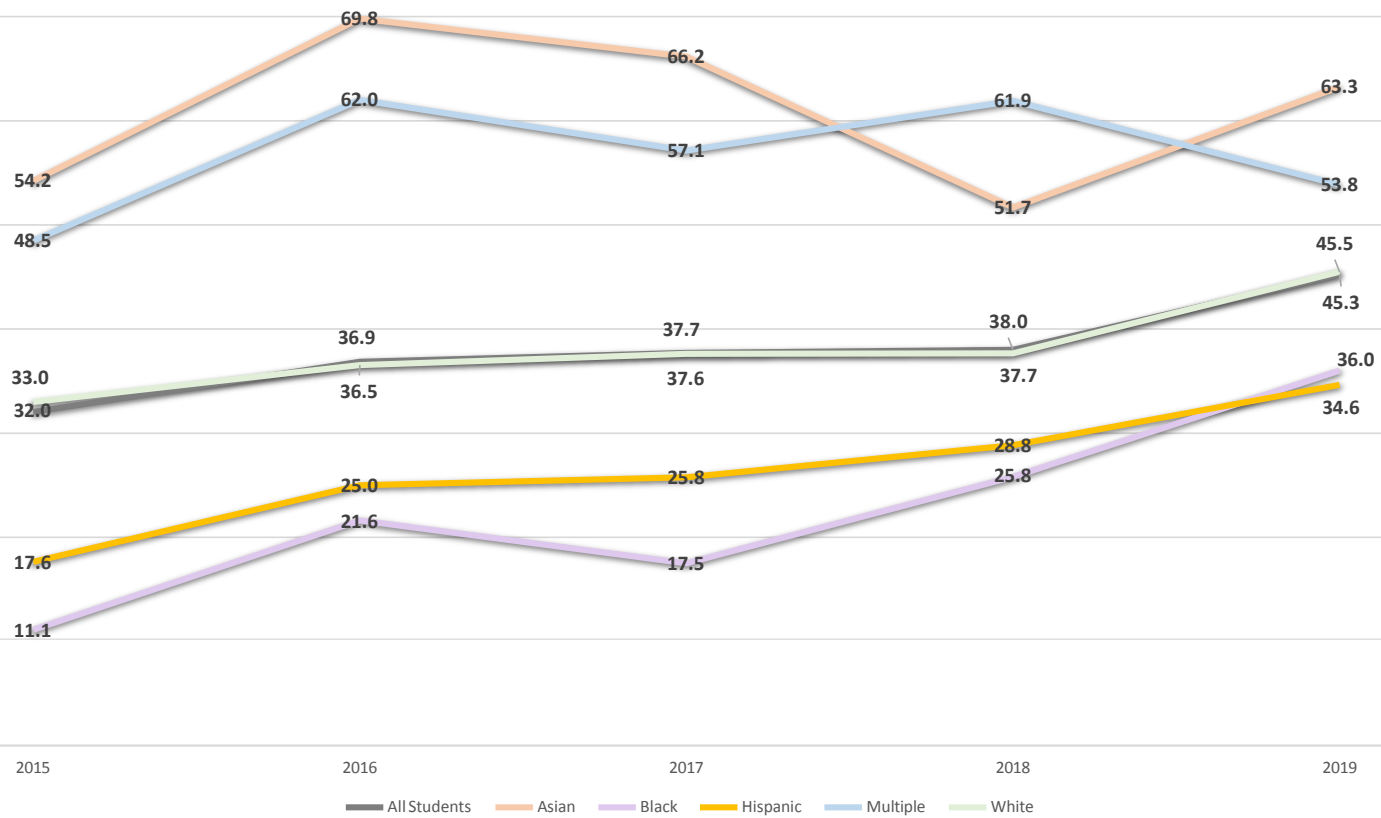


Hazlet School District

Subgroup Charts - Race

Mathematics

Performance of subgroups over 5 years (% Meeting or Exceeding)

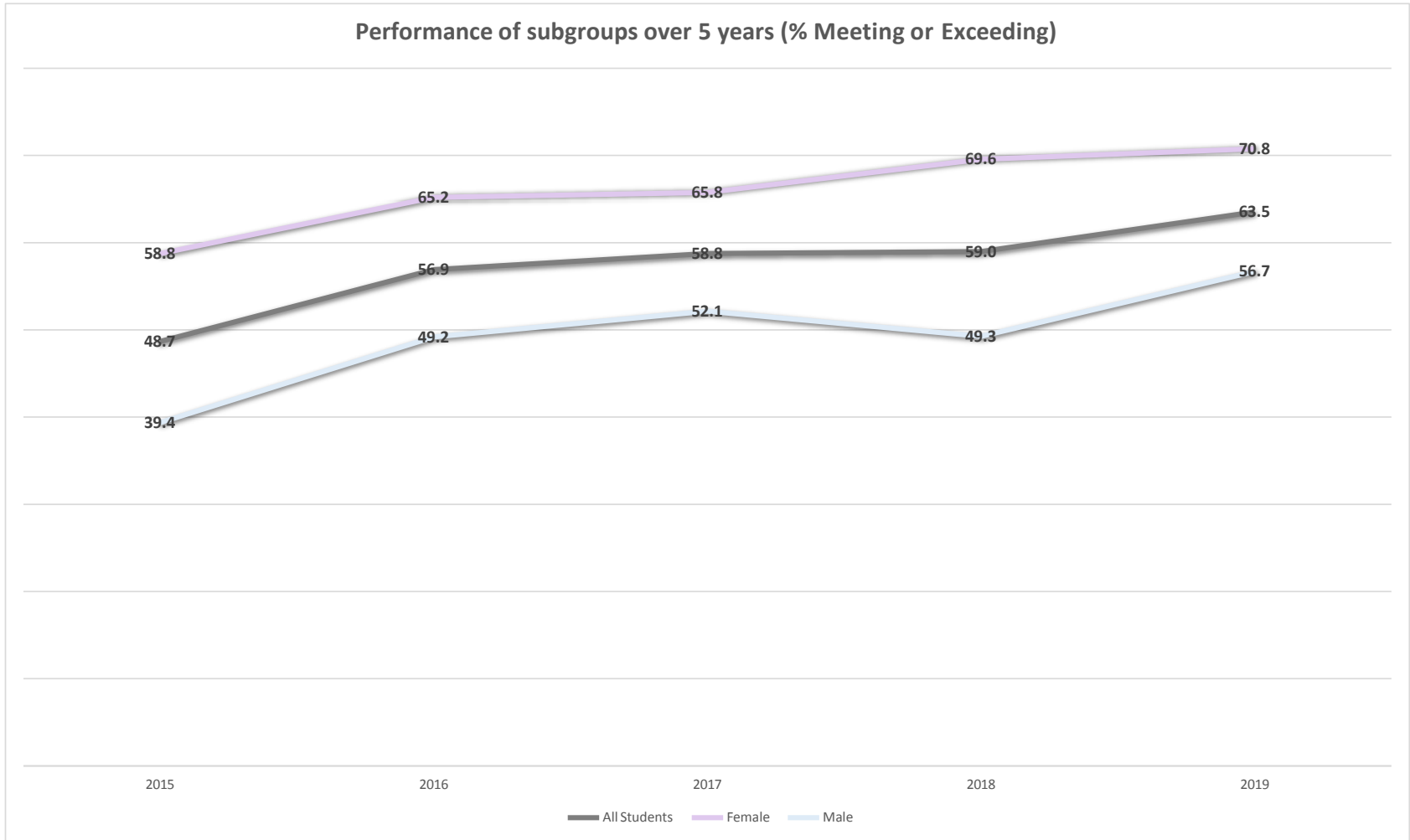


Hazlet School District

Subgroup Charts - Gender

English/Language Arts Literacy

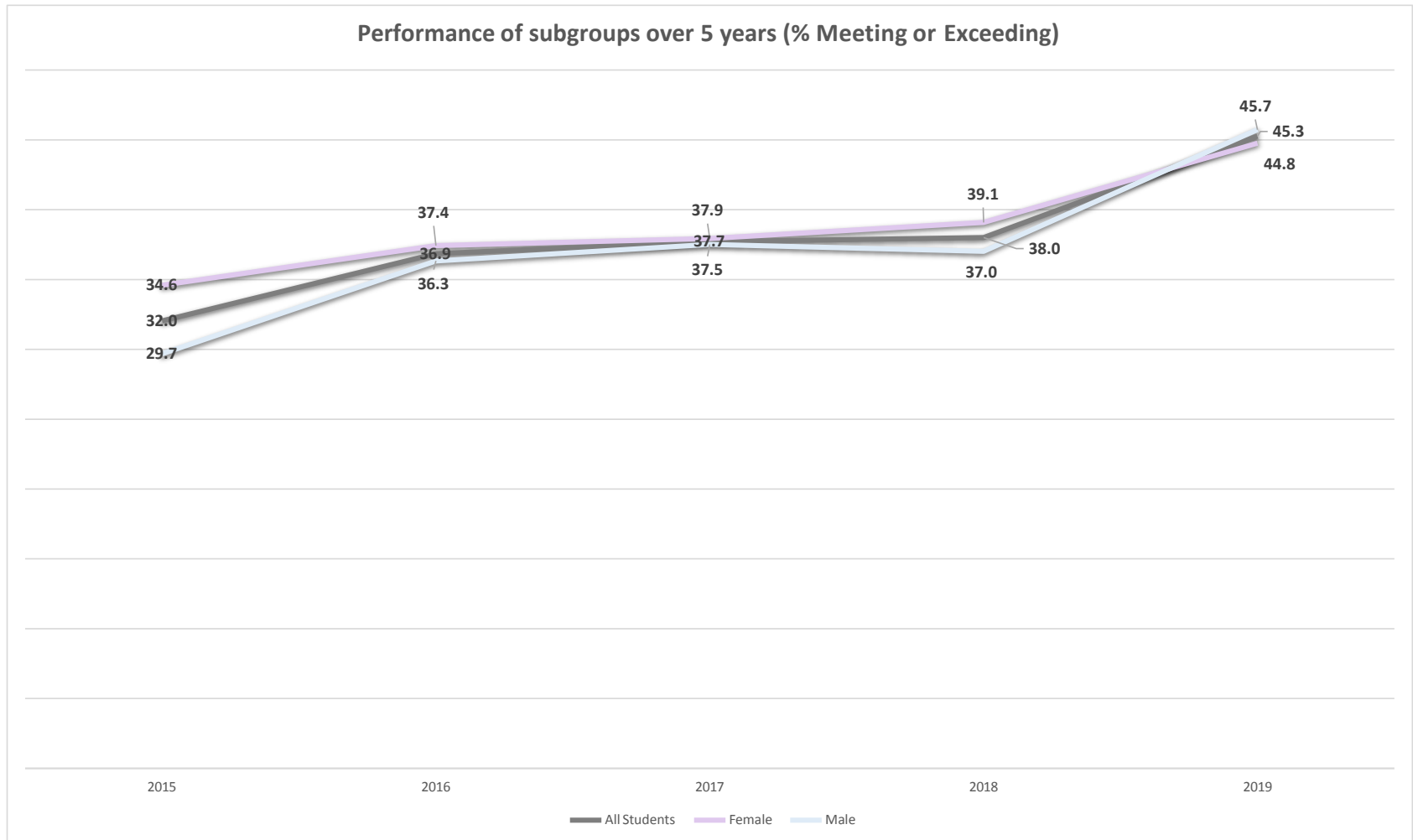
Performance of subgroups over 5 years (% Meeting or Exceeding)



Hazlet School District

Subgroup Charts - Gender

Mathematics

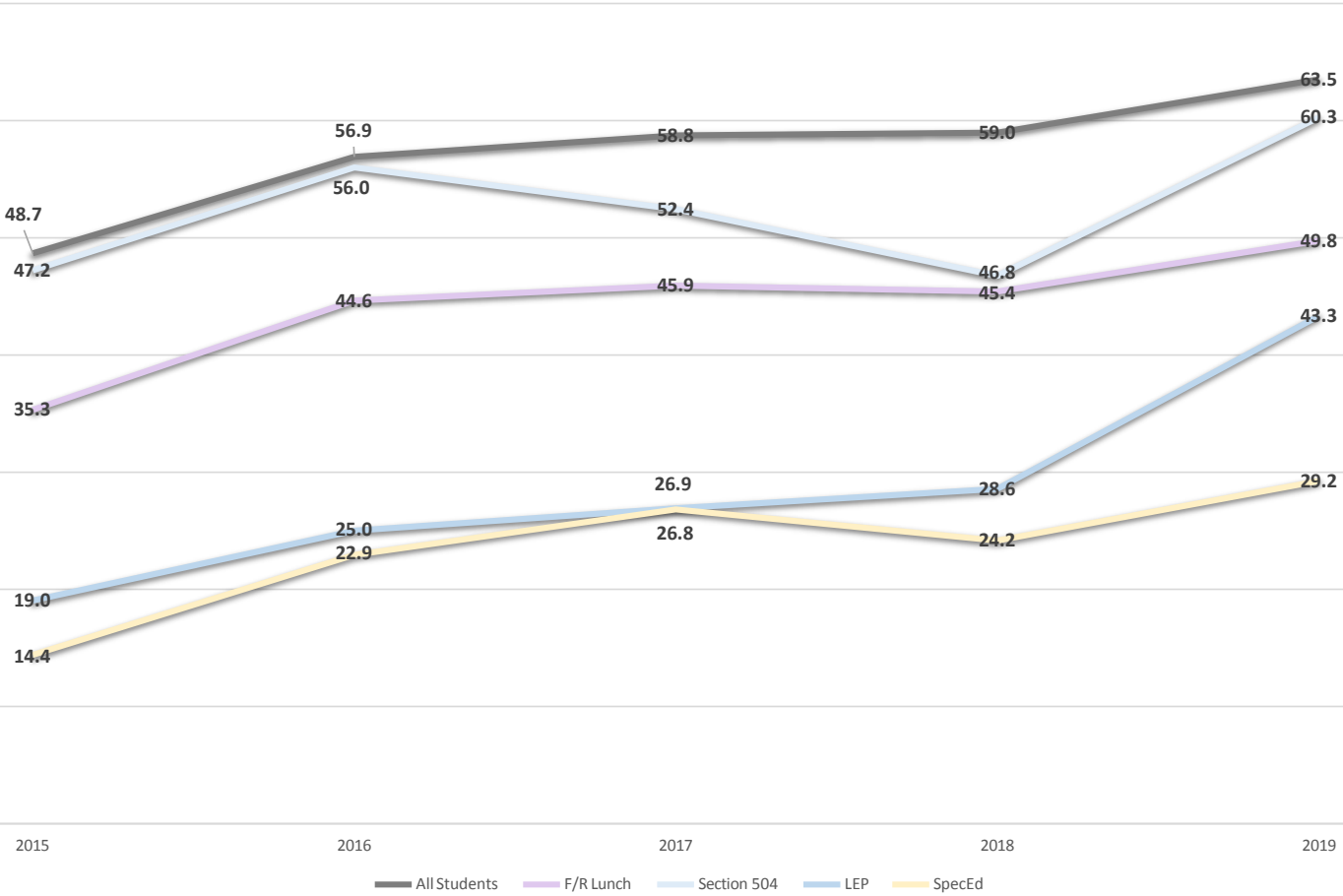


Hazlet School District

Subgroup Charts - Programs

English/Language Arts Literacy

Performance of subgroups over 5 years (% Meeting or Exceeding)

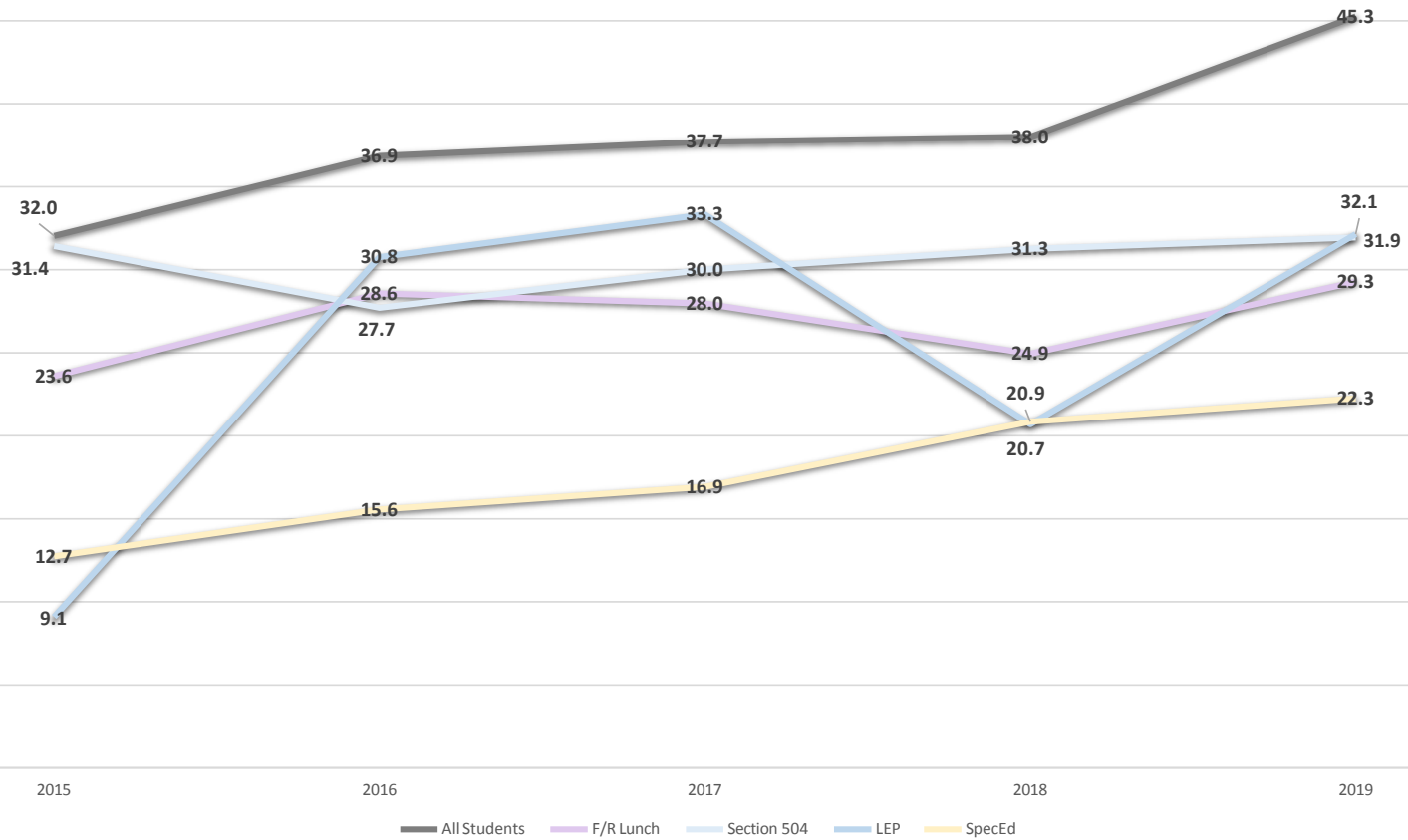


Hazlet School District

Subgroup Charts - Programs

Mathematics

Performance of subgroups over 5 years (% Meeting or Exceeding)



Notable Achievements

- The district increased the percentages of meeting and exceeding expectations in English Language Arts in grades 5, 6, 7, 9 and 10
- The district increased the percentages of meeting and exceeding expectations in Mathematics in grades 3, 5, 6, 7, 8, Algebra I, Algebra II and Geometry
- The district was above the state in percentages of meeting and exceeding expectations in all grades levels but one (3rd grade) for English Language Arts
- The district was above the state in percentages of meeting and exceeding expectations in grades 3, 4, 5, 6, 7, and Algebra I.
- All subgroups increased their percentage of passing both ELA and Math from 2018 to 2019.

Intervention Strategies

- The faculty from each building has scheduled professional development with our ELA and Math supervisors as well as with our data consultant to review all of these data points as well as specifics related to each classroom and child.
- Ongoing professional development with supervisors and outside assistance is occurring where needed.
- A consistent math series from grades K through Algebra 2 has been implemented this year with ongoing support from our math supervisor.
- Students are setting learning goals and working with teachers to monitor their progress.
- Afterschool tutoring is available.

ADVANCED PLACEMENT TEST

2018-2019

5 YEAR COMPARISON 2015 - 2019

	2015	2016	2017	2018	2019
Total AP Students	232	277	274	318	289
Number of Exams	375	432	447	566	533
AP Students with Scores 3+	112	125	141	164	170
% of Total AP Students with Scores 3+	48.3	45.1	51.5	51.6	58.8

ACCESS TESTING FOR ELL STUDENTS

2018-2019

ACCESS FOR ELLS 2.0 2019

Grade Cluster	# of Students Tested	Avg Scale Score (100-600)	Avg Proficiency Level (1-6)	# of Students Exited*
K	8	277	3.5	1
1	6	281	3.1	0
2-3	5	325	3.8	0
4-5	5	405	4.9	4
6-8	4	356	3.7	1
9-12	5	370	3.6	2
TOTAL	33	341	3.7	8

* must reach proficiency level of 4.5

ACCESS FOR ELLS 2.0 2019

Year	# of Students Tested	Level 1 (Entering)		Level 2 (Emerging)		Level 3 (Developing)		Level 4 (Expanding)		Level 5 (Bridging)		Level 6 (Reaching)	
		#	%	#	%	#	%	#	%	#	%	#	%
2017	25	1	4%	5	20%	5	20%	11	44%	1	4%	2	8%
2018	25	2	8%	2	8%	7	28%	13	52%	1	4%	0	0%
2019	33	3	9%	6	18%	8	24%	10	30%	6	18%	0	0%

Average Proficiency Level Increases of Students Receiving ESL Services

From 2017 to 2018: **.59**

From 2018 to 2019: **.69**

DYNAMIC LEARNING MAPS (DLM)

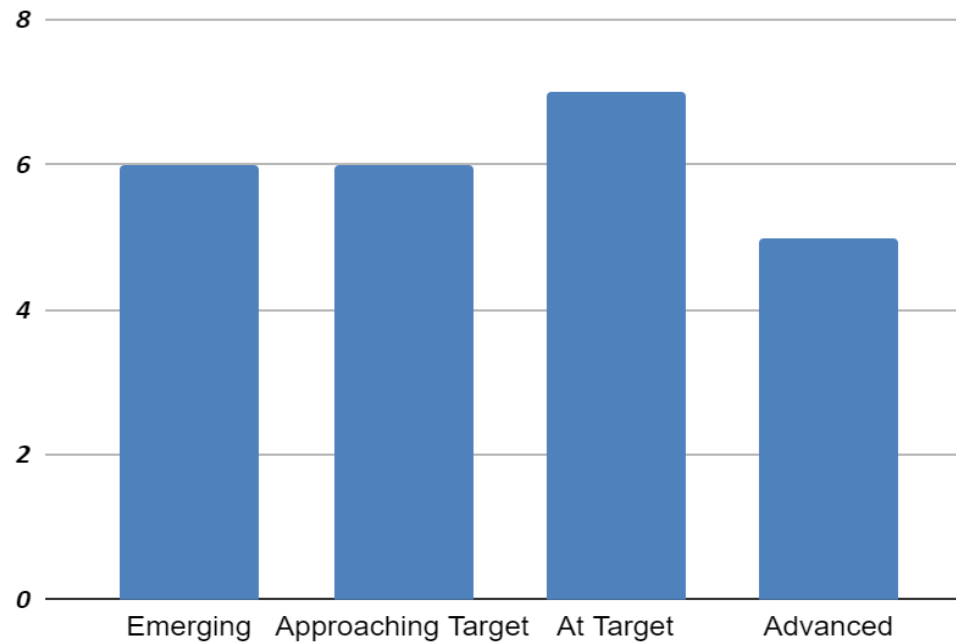
2018-2019

DYNAMIC LEARNING MAPS (DLM)

- Alternate Assessment
 - Language Arts Literacy
 - Mathematics
 - Science – grades 5, 8 & 11
- Measurement
 - “Emerging”
 - “Approaching Target”
 - “At Target”
 - “Advanced”
- Less than 1% of total school population

DLM ELA

DLM LAL RESULTS 2018-2019

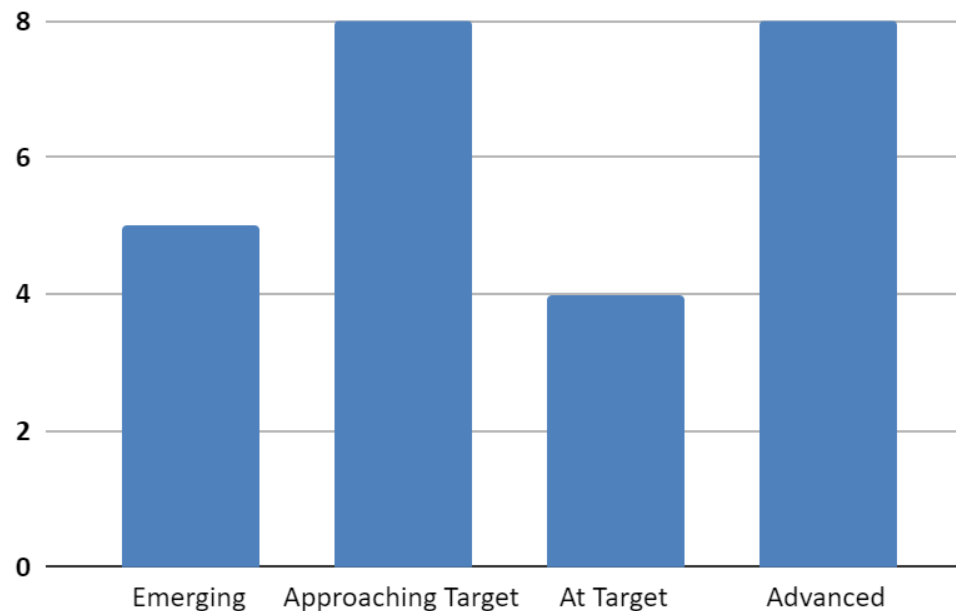


•Score Reports

- 25 evaluations administered
- 12 students at target or above

DLM MATH

DLM MATH RESULTS 2018-2019

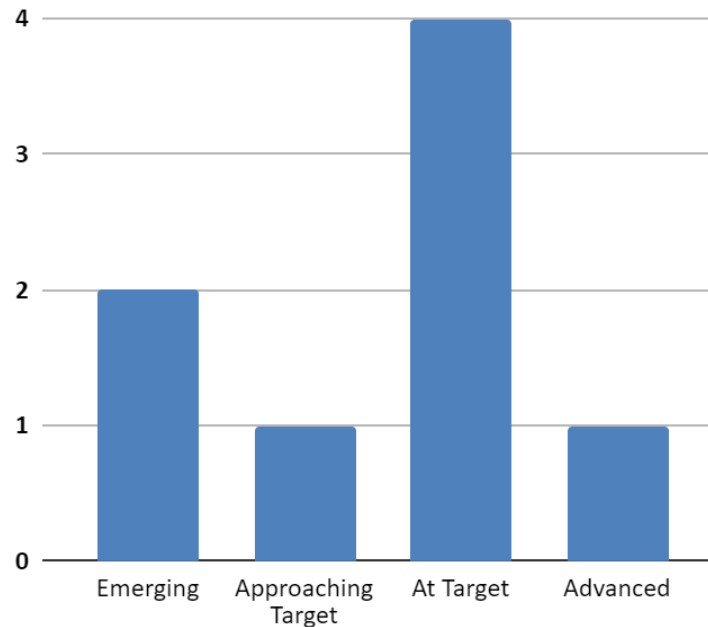


- Score Reports

- 25 evaluations administered
- 12 students at target or above

DLM SCIENCE

DLM SCIENCE RESULTS 2018-2019



•Score Reports

- 8 evaluations administered
- 5 students at target or above
- Grades 5, 8 & 11

2019-2020 ASSESSMENT SCHEDULE

	NJSLA	AP	ACCESS	DLM
GRADES 3 & 4	April 27 – May 4, 2020			April 1 – May 29, 2020
GRADES 5 & 6	May 7 – 19, 2020			April 1 – May 29, 2020
GRADES 7 & 8	May 11 – 20, 2020			April 1 – May 29, 2020
GRADES 9 & 10	May 18 – 22, 2020	May 4 – 15, 2020		April 1 – May 29, 2020
GRADES 11 & 12		May 4 – 15, 2020		
GRADES K-12			Feb 18 – April 10, 2020	

QUESTIONS?